



 **Georgia-Pacific**
Vinyl Siding & Accessories

PARKSIDE®

VINYL SKIRTING

PARKSIDE®

VINYL SKIRTING

THE PERFECT COVER-UP

WHY CHOOSE PARKSIDE

VINYL SKIRTING?

Looking for the perfect finishing touch for a home, deck or hot tub? Parkside® Vinyl Skirting is a beautiful solution, offering a finished look and a vented option.

- Attractive, brushed cedar-grain panels
- Available in solid or center vent designs
- Ventilated skirting features built-in center vents, eliminating the need for separate ventilating panels
- Patented pop-up top rail gives easy access to storage and utilities
- No painting: low maintenance vinyl washes clean with a garden hose
- Stands up to all climates – thick, high quality vinyl meets ASTM standards
- Won't conduct electricity
- Resists dents and insect damage
- Limited Lifetime Warranty* against checking, flaking, peeling or uneven weathering

COLORS



Due to printing limitations, colors may not be exactly as shown. See product samples for actual color match.

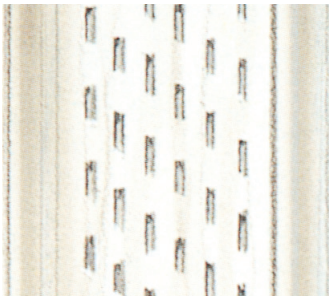
* For complete warranty details call 1-888-502-BLUE.



Create an outdoor closet by skirting a deck with Parkside vinyl skirting. The patented pop-up top rail gives easy access to storage and utilities.



Skirt a manufactured home for a trim, neat appearance.



Parkside ventilated skirting option features built-in center vents in each panel to provide critical air circulation that helps minimize musty odors and reduces moisture build-up, especially when used with a ground cover moisture barrier. Check with your local building code for the specific ventilation and moisture barrier requirements in your area.



You can hide hot tub footings and plumbing with Parkside vinyl skirting and still have convenient access to utilities.

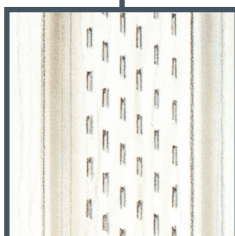
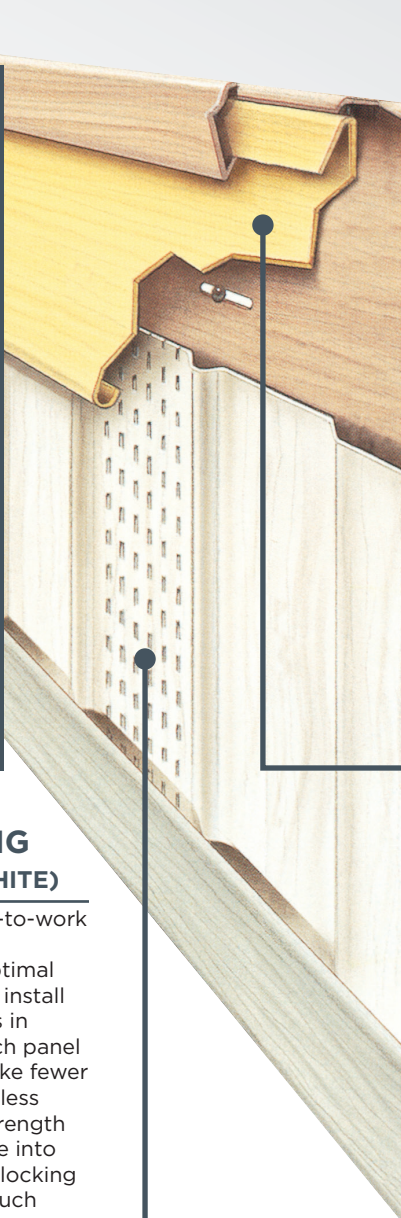
EASY TO INSTALL IN A WEEKEND.

- Four easy pieces
- Eight foot long panel lengths are easy to carry and handle
- Panel width of 16 in. allows for fewer cuts, quick installation
- Easy-to-follow instructions**
- Panels slide and lock for secure fit and placement
- Ideal for installation on new or existing home

**Installing panels higher than 48 in. (4 feet) is NOT RECOMMENDED

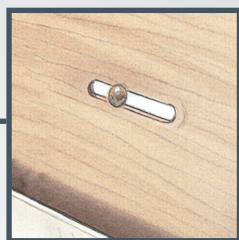
PARKSIDE SKIRTING PANEL (SHOWN IN WHITE)

Comes in easy-to-carry, easy-to-work with 8 ft. lengths you cut to heights of up to 48 in. For optimal performance, you should not install Parkside® vinyl skirting panels in excess of 48 in. in height. Each panel is 16 inches wide so you'll make fewer cuts, for easier installation in less time. Extra width provides strength against wind, too. Panels slide into one another in a secure, interlocking manner. The overall look is much more attractive.



TOP BACK RAIL (SHOWN IN WHITE)

This piece attaches to the bottom of the home or deck, and can be



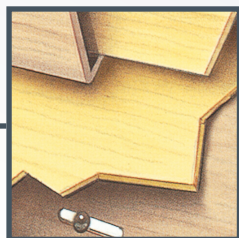
attached to the upper side of a hot tub. Features pre-cut holes for inserting attachment screws.

Elongated holes allow for

gentle movement during expansion of the rail in hot weather.

TOP FRONT RAIL

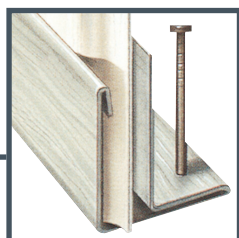
This piece snaps into the back rail, creating a channel to securely hold the panels in place. Features a patented, snap-in, pop-top design



that lets you flip the top rail up and out of the way. Then skirting panels can easily be slid up for access to your storage.

GROUND CHANNEL

May be installed on concrete or directly on ground. Has pre-cut holes for ground spikes or cement screws. When installed properly, the unique F-shaped design prevents the channel from rolling over. Allows skirting panels to nestle flexibly inside where they self adjust to settling



and changes in ground level due to winter frost or summer drought, minimizing buckle.

INSTALLATION: EASY AS 1-2-3

1 FIRST, CALCULATE THE MATERIALS YOU'LL NEED.

- With a tape, measure the perimeter of the home, deck or hot tub you wish to skirt, making sure to measure the entire perimeter, including bays, porches.
- The chart at bottom right shows some typical size homes and their corresponding linear measurements.
- To determine the average height, first measure the distance between the ground and the bottom of what you're skirting.
- Take this measurement at each of the corners and at the center of each side.
- Total all six of these measurements and divide by six to arrive at the average height.
- Next, find that height in the chart. Scan over to the point under the approximate linear footage of your project. That will be the number of skirting panels you will need to order.
- For the top front rails, top back rails, and ground channels you'll need to order, you need only look in the column under the linear footage that comes closest to your project.

2 SECOND, GATHER THE TOOLS YOU'LL NEED.

- The six tools you'll need are all commonly found. If you don't have the tools listed, your dealer will help you find them.

3 THIRD, BEGIN THE INSTALLATION. FOLLOW EACH STEP ILLUSTRATED.

Step 1. Use a plumb bob to find the points on the ground exactly under the corners of your home. Connect the points with a chalk line. Align ground channel over chalk line. Then use ground spikes to fasten the skirting ground channel along the chalk lines.

Step 2. To go around the corners, just notch, bend the ground channels and attach them to the ground. Don't cut them into two complete pieces.

Step 3. Working in a straight line along the bottom of your home, nail the top back rail onto the home all around.

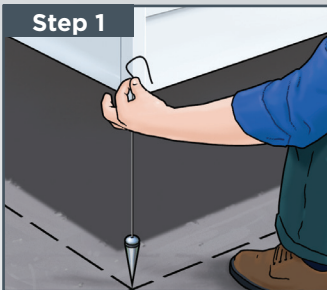
Step 4. Measure from the ground up to 1-1/2 in. above the bottom edge of the back rail. (If the temperature is below 40 degrees F, with frozen ground, at the time of installation, measure to 3 in. above the back rail edge.) Cut panels to the height you need, angling them on the bottom to correspond to ground angle. For optimal performance, Georgia-Pacific® vinyl skirting panels should not be installed in excess of 48 in. in height. With a snap-lock tool, punch tabs every 4 in. along both top and bottom edge of cut panel sections. Be sure to punch tabs so that they extend outward to catch on rail. Interlock several panels at a time, then set them into ground channel. At corners, just bend panels; they're flexible. Don't cut them.

Step 5. Snap the top front rail into the top back rail and you're finished.

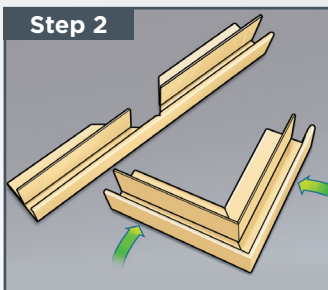
Tools Needed

- Hammer
- Chalk line
- Tape measure
- Trim snips
- Plumb bob
- Snap-lock tool

Step 1



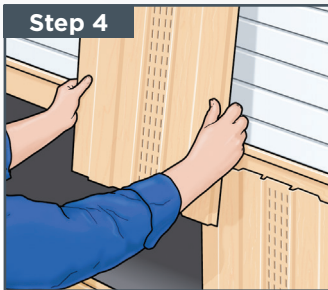
Step 2



Step 3



Step 4



Step 5



Home Size	12 x 50	12 x 55	12 x 60	12 x 65	12 x 70	14 x 60	14 x 65	14 x 70	14 x 80	16 x 60	16 x 65	16 x 70	24 x 60	24 x 65
Footage	124	134	144	154	164	148	158	168	188	152	162	172	168	178
# of pcs per panel	Height from Ground	Number of 8 ft. long skirting panels needed:												
5	16-18"	19	21	22	24	25	23	24	26	29	23	25	26	27
4	19-24"	24	26	27	29	31	28	30	32	36	29	31	33	34
3	25-32"	31	34	36	39	41	37	40	42	47	38	41	43	45
2	33-48"	47	51	54	58	62	56	60	63	71	57	61	65	67
Number of each of top front, top back and ground rails needed 11 ft. 6 in.														
		16	17	18	20	21	19	20	21	24	19	21	22	23

A SIMPLIFIED LIFESTYLE

Look to Georgia-Pacific® Vinyl Siding, Skirting, Soffit and Accessories for beautiful, low maintenance solutions. You'll also appreciate the products' easy installation that saves you time and effort.

Materials Worksheet

Step one

Enter linear footage.

Feet

inches

Step two

Enter actual height at each of four corners and total below.

Corner 1

inches

Corner 2

inches

Corner 3

inches

Corner 4

inches

Total 1

inches

Step three

Enter actual height at the center of each side and total below.

Side 1

inches

Side 2

inches

Total 2

inches

Step four

Add total 1 to total 2

Total 3

inches

Step five

Divide total 3 by 6 and enter below

This is the average height:

inches

Distributed by

BlueLinx

www.bluelinxco.com

BlueLinx Corporation
4300 Wildwood Parkway
Atlanta, Georgia 30339
1-888-502-BLUE
1-800-839-2588 (Eastern Sales Region)
1-800-830-7370 (Western Sales Region)

Georgia-Pacific and the GP logo are trademarks owned by or licensed to Georgia-Pacific LLC and are used under license. Georgia-Pacific LLC does not manufacture, distribute or warrant the products described in this brochure. PARKSIDE is a registered trademark, and BLUELINX and the BLUELINX design are trademarks and registered service marks of BlueLinx Services Inc.